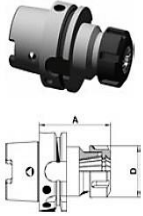


DIN 69893 HSK - A
DIN 69893 HSK - A

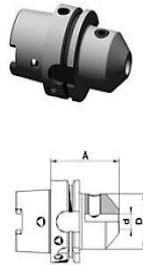
Spannzangenfutter ER - Form A
Collet chucks ER - form A



Gewuchtet G = 6,3 20.000 U/min.
 Balanced G = 6,3 20.000 U/min.

HSK	Für Spannanzge / For collet	Spannbereich / Clamping range mm	D mm	A mm	Art.-Nr. / Order no.
63A	ER16	1-10	26	100	17-SR63A-ER16-100
63A	ER16	1-10	26	160	17-SR63A-ER16-160
63A	ER25	2-16	42	100	17-SR63A-ER25-100
63A	ER25	2-16	42	160	17-SR63A-ER25-160
63A	ER32	2-20	50	100	17-SR63A-ER32-100
63A	ER32	2-20	50	160	17-SR63A-ER32-160
63A	ER40	3-26	63	120	17-SR63A-ER40-120
63A	ER40	3-26	63	160	17-SR63A-ER40-160

Flächenspannfutter WELDON - Form A
End mill adaptors WELDON - form A



Gewuchtet G = 6,3 20.000 U/min.
 Balanced G = 6,3 20.000 U/min.

HSK	d mm	D mm	A mm	Art.-Nr. / Order no.
63A	6	25	65	17-WE63A-6-65
63A	6	25	100	17-WE63A-6-100
63A	8	28	65	17-WE63A-8-65
63A	8	28	100	17-WE63A-8-100
63A	10	35	65	17-WE63A-10-65
63A	10	35	100	17-WE63A-10-100
63A	12	42	80	17-WE63A-12-80
63A	12	42	100	17-WE63A-12-100
63A	14	44	80	17-WE63A-14-80
63A	14	44	100	17-WE63A-14-100
63A	16	48	80	17-WE63A-16-80
63A	16	48	100	17-WE63A-16-100
63A	16	48	160	17-WE63A-16-160
63A	18	50	80	17-WE63A-18-80
63A	18	50	100	17-WE63A-18-100
63A	20	52	80	17-WE63A-20-80
63A	20	52	100	17-WE63A-20-100
63A	25	65	110	17-WE63A-25-110
63A	32	72	110	17-WE63A-32-110
63A	40	80	125	17-WE63A-40-125

DIN 69893 HSK - A

Bohrstangenrohling - Form A
Blank adaptor - form A



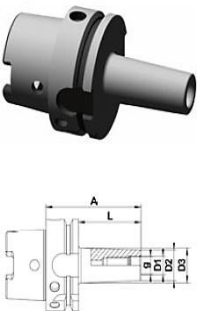
HSK	D mm	d mm	A mm	Art.-Nr. / Order no.
63A	63	50	160	17-BR63A-63-160

Prüfdorn - Form A
Test arbor - form A



HSK	D mm	A mm	Art.-Nr. / Order no.
63A	40	300	17-PD63A-40-300

Fräsdorne für Einschraubfräser - Form A
Screw-in type milling arbors - form A

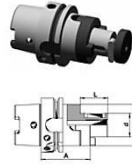


Gewuchtet G = 6,3 15.000 U/min.
 Balanced G = 6,3 15.000 U/min.

HSK	g	D1 mm	D2 mm	D3 mm	A mm	L mm	Art.-Nr. / Order no.
63A	M6	6,5	10	13	51	25	17-FA63A-M6-25
63A	M8	6,5	13	15	51	25	17-FA63A-M8-25
63A	M8	6,5	13	23	76	50	17-FA63A-M8-50
63A	M8	6,5	13	23	101	75	17-FA63A-M8-75
63A	M10	10,5	16	20	51	25	17-FA63A-M10-25
63A	M10	10,5	16	23	76	50	17-FA63A-M10-50
63A	M10	10,5	16	32	126	100	17-FA63A-M10-100
63A	M10	10,5	18	36,5	176	150	17-FA63A-M10-150
63A	M12	12,5	21	24	51	25	17-FA63A-M12-25
63A	M12	12,5	21	24	76	50	17-FA63A-M12-50
63A	M12	12,5	21	31	101	75	17-FA63A-M12-75
63A	M12	12,5	21	33	126	100	17-FA63A-M12-100
63A	M12	12,5	21	40	176	150	17-FA63A-M12-150
63A	M16	17	29	29	51	25	17-FA63A-M16-25
63A	M16	17	29	34	76	50	17-FA63A-M16-50
63A	M16	17	29	34	101	75	17-FA63A-M16-75
63A	M16	17	29	36	126	100	17-FA63A-M16-100
63A	M16	17	29	42,5	176	150	17-FA63A-M16-150

DIN 69893 HSK - A

Kombi-Fräsaufsteckdorne DIN 6358 - Form A
Combination shell mill adaptors DIN 6358 - form A

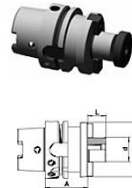


Gewuchtet G = 6,3 20.000 U/min.
 Balanced G = 6,3 20.000 U/min.

HSK	d mm	D mm	A mm	L mm	Art.-Nr. / Order no.
63A	16	32	60	27	17-KD63A-16-60
63A	16	32	100	27	17-KD63A-16-100
63A	22	40	60	31	17-KD63A-22-60
63A	22	40	100	31	17-KD63A-22-100
63A	27	48	60	33	17-KD63A-27-60
63A	27	48	100	33	17-KD63A-27-100
63A	32	58	65	36	17-KD63A-32-65
63A	32	58	100	36	17-KD63A-32-100
63A	40	70	70	41	17-KD63A-40-70

Messerkopf-Aufnahmen DIN 6357 - Form A
Shell mill holders DIN 6357 - form A

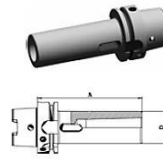
- mit vergrößertem Bunddurchmesser - with enlarged collar diameter



Gewuchtet G = 6,3 20.000 U/min.
 Balanced G = 6,3 20.000 U/min.

HSK	d mm	D mm	L mm	A mm	Art.-Nr. / Order no.
63A	16	28	17	45	17-MS63A-16-45
63A	16	28	17	100	17-MS63A-16-100
63A	22	48	19	50	17-MS63A-22-50
63A	22	48	19	100	17-MS63A-22-100
63A	27	58	21	55	17-MS63A-27-55
63A	27	58	21	100	17-MS63A-27-100
63A	32	78	24	60	17-MS63A-32-60
63A	32	78	24	100	17-MS63A-32-100
63A	40	88	27	65	17-MS63A-40-65
63A	40	88	27	100	17-MS63A-40-100

Einsatzhülsen für MK-Werkzeuge mit Austreiblappen - Form A
Adaptors for Morse taper tools with tang - form A



HSK	MK / MT	D mm	A mm	Art.-Nr. / Order no.
63A	1	25	100	17-EH63A-MK1
63A	2	32	115	17-EH63A-MK2
63A	3	40	135	17-EH63A-MK3
63A	4	48	160	17-EH63A-MK4

DIN 69893 HSK - A

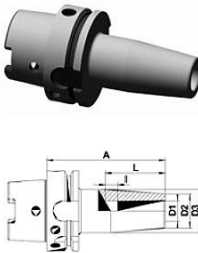
Hydrodehnspannfutter - Form A
Hydraulic expansion chuck - form A



Gewuchtet G = 2,5 25.000 U/min.
 Balanced G = 2,5 25.000 U/min.

HSK	d1 mm	d2 mm	d4 mm	l1 mm	l2 mm	l5 mm	SW	Art.-Nr. / Order no.
63A	6	26	50	70	37	24	5	17-HD63A-6-70
63A	6	26	50	70	37	24	5	17-HD63A-6-70
63A	10	30	50	80	41	35	5	17-HD63A-10-80
63A	12	32	50	85	46	40	5	17-HD63A-12-85
63A	14	34	50	85	46	40	5	17-HD63A-14-85
63A	16	38	50	95	49	46	5	17-HD63A-16-95
63A	18	40	50	95	49	47	5	17-HD63A-18-95
63A	20	42	50	95	51	48	5	17-HD63A-20-95
63A	25	50	80	110	57	59	6	17-HD63A-25-110
63A	32	62	80	125	61	63	6	17-HD63A-32-125

Schrumpffutter - Form A
Shrink chuck - form A

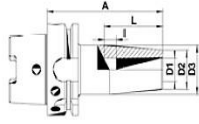


Gewuchtet G = 2,5 25.000 U/min.
 Balanced G = 2,5 25.000 U/min.

HSK	D1 mm	D2 mm	D3 mm	L mm	l mm	A mm	Art.-Nr. / Order no.
63A	3	10	20	15	-	80	17-SHF63A-3-80
63A	3	10	20	15	-	120	17-SHF63A-3-120
63A	3	10	20	15	-	160	17-SHF63A-3-160
63A	4	15	22	15	-	80	17-SHF63A-4-80
63A	4	15	22	15	-	120	17-SHF63A-4-120
63A	4	15	22	15	-	160	17-SHF63A-4-160
63A	5	15	22	20	-	80	17-SHF63A-5-80
63A	5	15	22	20	-	120	17-SHF63A-5-120
63A	5	15	22	20	-	160	17-SHF63A-5-160
63A	6	20	27	36	10	80	17-SHF63A-6-80
63A	6	20	27	36	10	120	17-SHF63A-6-120
63A	6	20	27	36	10	160	17-SHF63A-6-160
63A	8	20	27	36	10	80	17-SHF63A-8-80
63A	8	20	27	36	10	120	17-SHF63A-8-120
63A	10	24	31	41	10	85	17-SHF63A-10-85
63A	10	24	31	41	10	120	17-SHF63A-10-120
63A	10	24	31	41	10	160	17-SHF63A-10-160
63A	12	24	31	47	10	90	17-SHF63A-12-90
63A	12	24	31	47	10	120	17-SHF63A-12-120
63A	12	24	31	47	10	160	17-SHF63A-12-160
63A	14	27	34	47	10	90	17-SHF63A-14-90
63A	14	27	34	47	10	120	17-SHF63A-14-120
63A	14	27	34	47	10	160	17-SHF63A-14-160

DIN 69893 HSK - A

Shrink chuck - form A



HSK	D1 mm	D2 mm	D3 mm	L mm	l mm	A mm	Art.-Nr. / Order no.
63A	16	27	34	50	10	95	17-SHF63A-16-95
63A	16	27	34	50	10	120	17-SHF63A-16-120
63A	16	27	34	50	10	160	17-SHF63A-16-160
63A	18	33	40	50	10	95	17-SHF63A-18-95
63A	18	33	40	50	10	120	17-SHF63A-18-120
63A	18	33	40	50	10	160	17-SHF63A-18-160
63A	20	33	40	52	10	100	17-SHF63A-20-100
63A	20	33	40	52	10	120	17-SHF63A-20-120
63A	20	33	40	52	10	160	17-SHF63A-20-160
63A	25	44	53	58	10	120	17-SHF63A-25-120
63A	25	44	53	58	10	160	17-SHF63A-25-160
63A	32	44	53	62	10	120	17-SHF63A-32-120
63A	32	44	53	62	10	160	17-SHF63A-32-160

Gewicht G = 2,5 25.000 U/min.
Balanced G = 2,5 25.000 U/min.

Coolant tubes



Für / For HSK	D mm	Gewinde / Thread	Art.-Nr. / Order no.
32	6	M10x1	17-KMR32
40	8	M12x1	17-KMR40
50	10	M16x1	17-KMR50
63	12	M18x1	17-KMR63
80	14	M20x1,5	17-KMR80
100	16	M24x1,5	17-KMR100

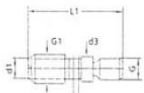
Wrench for coolant tubes



HSK	Art.-Nr. / Order no.
63	17-SCH-KMR63
100	17-SCH-KMR100

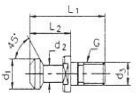
Pull studs

S 20x2, mit Sägegewinde



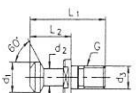
SK	G	G1	d1 mm	d3 mm	L1 mm	Art.-Nr. / Order no.
40	M 16	S 20x2	16,6	17	58	13-9886B-40-58

MAS BT, 45°



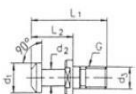
SK	G	d1 mm	d2 mm	d3 mm	L1 mm	L2 mm	Art.-Nr. / Order no.
30	M 12	11	7	13	43	24	13-9882B-30-45
40	M 16	15	10	17	60	35	13-9882B-40-45
50	M 24	23	17	25	85	45	13-9882B-50-45

MAS BT, 60°



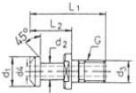
SK	G	d1 mm	d2 mm	d3 mm	L1 mm	L2 mm	Art.-Nr. / Order no.
30	M 12	11	7	13	43	24	13-9882B-30-60
40	M 16	15	10	17	60	35	13-9882B-40-60
50	M 24	23	17	25	85	45	13-9882B-50-60

MAS BT, 90°



SK	G	d1 mm	d2 mm	d3 mm	L1 mm	L2 mm	Art.-Nr. / Order no.
40	M 16	15	10	17	60	35	13-9882B-40-90
50	M 24	23	17	25	85	45	13-9882B-50-90

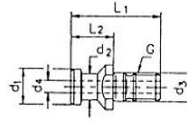
MAS BT, 45°, mit Bohrung



SK	G	d1 mm	d2 mm	d3 mm	d4 mm	L1 mm	L2 mm	Art.-Nr. / Order no.
40	M 16	15	10	17	7	60	35	13-9882A-40-45
50	M 24	23	17	25	11,5	85	45	13-9882A-50-45

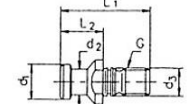
Pull studs

DIN 69872 A, mit Bohrung



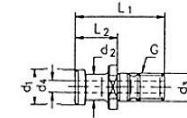
SK	G	d1 mm	d2 mm	d3 mm	d4 mm	L1 mm	L2 mm	Art.-Nr. / Order no.
30	M 12	13	9	13	—	44	24	13-9884A-30-44
40	M 16	19	14	17	7	54	26	13-9884A-40-54
50	M 24	28	21	25	11,5	74	36	13-9884A-50-74

DIN 69872 B, ohne Bohrung



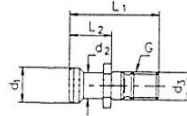
SK	G	d1 mm	d2 mm	d3 mm	L1 mm	L2 mm	Art.-Nr. / Order no.
30	M 12	13	9	13	44	24	13-9884B-30-44
40	M 16	19	14	17	54	26	13-9884B-40-54
50	M 24	28	21	25	74	36	13-9884B-50-74

ISO 7388 II A, mit Bohrung



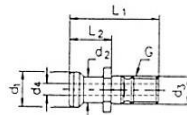
SK	G	d1 mm	d2 mm	d3 mm	d4 mm	L1 mm	L2 mm	Art.-Nr. / Order no.
40	M 16	19	14	17	7	54	26	13-9885A-40-54
50	M 24	28	21	25	11,5	74	36	13-9885A-50-74

ISO 7388 II B-OB, ohne Bohrung



SK	G	d1 mm	d2 mm	d3 mm	L1 mm	L2 mm	Art.-Nr. / Order no.
40	M 16	18,95	12,95	17	44,5	16,40	13-9885B-40-45
50	M 24	29,10	19,80	25	65,5	25,56	13-9885B-50-66

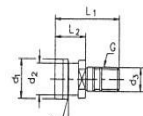
ISO 7388 II B-MB, mit Bohrung



SK	G	d1 mm	d2 mm	d3 mm	d4 mm	L1 mm	L2 mm	Art.-Nr. / Order no.
40	M 16	18,95	12,95	17	7	44,5	16,40	13-9885B-40-45
50	M 24	29,10	19,80	25	11,5	65,5	25,56	13-9885B-50-66

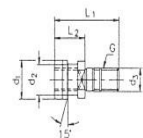
Pull studs

OTT, ohne Bohrung



SK	G	d1 mm	d2 mm	d3 mm	L1 mm	L2 mm	Art.-Nr. / Order no.
40	M 16	25,0	21,1	17	53	25	13-9883-40
50	M 24	39,5	32,0	25	65	25	13-9883-50

OTT, mit Innengewinde



SK	G	d1 mm	d2 mm	d3 mm	L1 mm	L2 mm	Art.-Nr. / Order no.
40	M 16	25,0	21,1	17	53	25	13-98831-40
50	M 24	39,5	32,0	25	65	25	13-98831-50

Einsatzgehärtet 58 HRC ± 2 Eht.
0,5 - 0,8 mm. Geschliffen und brüniert.

Case-hardened 58 HRC ± 2 Eht.
0,5 - 0,8 mm. Ground and brown

Spezielle Anzugsbolzen für sämtliche
Maschinen lieferbar auf Anfrage

Special pull studs for all machines
available upon request

Steckschlüssel für Anzugsbolzen

Sicherheits-Steckschlüssel SK und MAS BT



Typ / Type	DIN	Art.-Nr. / Order no.
SK 40	DIN 69872	13-SCHA-SK40
SK 50	DIN 69872	13-SCHA-SK50
BT 40	MAS BT	13-SCHA-BT40
BT 50	MAS BT	13-SCHA-BT50